

# Key Investor Information



This document provides you with key investor information about this fund. It is not marketing material. The information is required by law to help you understand the nature and the risks of investing in this fund. You are advised to read it so you can make an informed decision about whether to invest.

## WisdomTree Global Automotive Innovators UCITS ETF - USD Acc

ISIN: IE000TB3YTV4

a share class of WisdomTree Global Automotive Innovators UCITS ETF (the "Fund")

which is a sub-fund of WisdomTree Issuer ICAV. Managed by WisdomTree Management Limited.

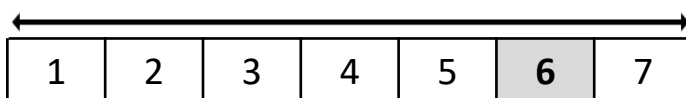
### Objectives and Investment Policy

- The Fund seeks to track the price and yield performance, before fees and expenses of the WisdomTree Berylls LeanVal Global Automotive Innovators NTR Index (the "Index").
- The Index is designed to track the performance of companies primarily involved in the automobility and future mobility industry.
- To be eligible for inclusion in the Index, a security must meet the following criteria: (i) derive at least 50% of its revenue from the automobility and future mobility industry; (ii) be listed on an eligible stock exchange; (iii) have a minimum market capitalisation of \$1 billion; (iv) have a minimum three-month average daily dollar trading volume of \$2 million; and (v) meet other criteria as outlined in the Index methodology.
- The Index excludes companies based on environmental, social and governance criteria.
- The Index utilises two further screening scores developed by WisdomTree, Inc. in collaboration with third party specialists in the automobility sector:
  - The "Focus Score," which is a compound industry focus measure capturing the perceived degree of a company's overall focus on the automobility industry, including innovation and sustainability strategy, and competitiveness in the value chain.
  - The "Fundamental Score," which is an aggregation of five equally weighted fundamental factor scores (including value, quality, stability, growth, and momentum).
- Each company is assigned a final score based on the equal weighting of its Focus Score and Fundamental Score (the "Final Score"). The top 100 companies are selected for Index inclusion based on their Final Scores and are weighted by their float-adjusted market capitalisation.
- The Index is rebalanced semi-annually in March and September.
- In order to achieve its objective, the Fund will employ a "passive management" (or indexing) investment approach and will invest in a portfolio of equity securities that, so far as possible and practicable, consists of a representative sample of the component securities of the Index.
- As it may be difficult, expensive or otherwise inefficient to purchase all the securities in the Index, the Fund may also hold shares or other securities which produce a similar investment return to securities in the Index or may invest in collective investment schemes.
- The Fund may enter into repurchase/reverse repurchase agreements and stock lending arrangements solely for the purposes of efficient portfolio management, subject to the conditions and within the limits set out in the prospectus for WisdomTree Issuer ICAV (the "Prospectus").
- Shares of the Fund ("Shares") are listed on one or more stock exchanges. Typically, only Authorised Participants (i.e. brokers) can purchase Shares from or sell Shares back to the Fund. Other investors can purchase and sell Shares on exchange on each day the relevant stock exchange is open.
- Distribution policy: Dividends will not be distributed to shareholders in respect of the shares of this class. Income and other profits will be accumulated and reinvested on behalf of the shareholders.
- Recommendation: This Fund may not be appropriate for short-term investment.
- Currency: The base currency of the Fund is US Dollar. The currency of denomination of this share class is US Dollar.
- For full investment objectives and policy details, please refer to the supplement to the Prospectus for the Fund (the "Supplement").

### Risk and Reward Profile

**Lower Risk**  
Potentially lower rewards

**Higher Risk**  
Potentially higher rewards



- The categorisation above is not guaranteed to remain unchanged and may shift over time.
- The lowest category (1) does not imply a risk-free investment.
- The risk indicator was calculated incorporating simulated historical data and may not be a reliable indication of the future risk profile of the Fund.
- The SRRl categorisation above (6) is due to the nature of the Fund's investments and risk associated with those investments, including:
  - The value of underlying securities can be affected by daily financial market movements. Other influential factors include political, economic news, company earnings and significant corporate events.
  - There is no assurance that any appreciation in the value of investments will occur, or that the investment objective of the Fund will be achieved.
  - Investment risk may be concentrated in specific sectors, countries, currencies or companies. This means the Fund is more sensitive to any localised economic, market, political or regulatory events.

- Risks not covered by the indicator, but which are materially relevant to the Fund include:
  - Tracking error risk: The Fund's performance may not exactly track the Index. This can result from market fluctuations, changes in the composition of the Index, transaction costs, the costs of making changes to the Fund's portfolio, and other Fund expenses.
  - There can be no certainty that Shares can always be bought or sold on a stock exchange or that the market price will reflect the NAV of the Fund.
  - It may be difficult for the Fund to buy or sell certain investments in some market conditions. Consequently, the price obtained when the Fund buys or sells securities may compare adversely to the price under normal market conditions.
  - Counterparty risk: The Fund is subject to the risk that third parties with which the Fund may transact and who may provide services such as the safekeeping of assets may go bankrupt or fail to pay money due to the Fund or return property belonging to the Fund.
  - Operational risk: There is a risk of default or error within the different service providers involved in managing and servicing the Fund, and valuing the portfolio.
- For a complete overview of all risks attached to this Fund, refer to the section entitled "Risk Factors" in the Supplement and the Prospectus.

# Key Investor Information



## Charges

The charges you pay are used to pay the costs of running the Fund, including the costs of marketing and distributing it. These charges reduce the potential growth of your investment.

### One-off charges taken before or after you invest

Entry charge	None*
Exit charge	None*

### Charges taken from the Fund over a year

Ongoing charges	0.45%**
-----------------	---------

### Charges taken from the Fund under certain specific conditions

Performance fee	None
-----------------	------

\* These are the maximum fees and charges which are currently payable by authorised participants dealing directly with WisdomTree Issuer ICAV. The Fund has the right to charge authorised participants an entry charge up to a maximum of 3% and an exit charge up to a maximum of 3%. The Fund is currently not exercising its entitlement to apply entry and exit charges.

\*Entry and exit charges are not applicable to secondary market investors. As the Fund is an ETF, secondary market investors will not typically be able to deal directly with WisdomTree Issuer ICAV. Investors buying Shares on exchange will do so at market prices which will reflect broker fees and/or other charges.

\* Authorised participants dealing directly with the Fund will pay related transaction costs.

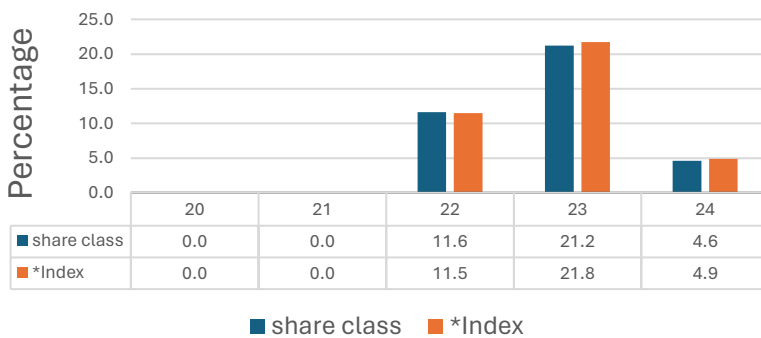
\* For authorised participants dealing directly with the Fund, switching between sub-funds may incur a maximum switching charge of 3%. The Fund is currently not exercising its entitlement to apply switching charges.

\*\* The ongoing charges may vary year on year. It excludes portfolio transaction costs, except in the case of an entry/exit charge paid by the Fund when buying or selling units in another investment fund.

Please see "Fees and Expenses" section of the Prospectus and "Fees" and "Share Dealing" ("Subscriptions following the initial offer period" and "Redemptions" sub-sections) sections of the Supplement for further information about charges.

## Past Performance

### Historical Performance



- Historical performance is not an indication of future performance and any investments may go down in value.
- The chart shows the share class' annual performance as of 31/12/2024 calculated in US Dollar
- The Fund was launched in 2022
- Share class launch date: 23/09/2022
- Performance is shown after deduction of the ongoing charges. It excludes entry and exit fees.
- \*Index Name: WisdomTree Berylls LeanVal Global Automotive Innovators NTR Index

Source: WisdomTree

## Practical Information

**Depository:** State Street Custodial Services (Ireland) Limited.

**Administrator:** State Street Fund Services (Ireland) Limited.

**Further information:** Copies of the Prospectus documentation and the latest financial statements are available free of charge, in English, from the Administrator. The Prospectus and financial statements are prepared for WisdomTree Issuer ICAV rather than separately for the Fund. Further information about the Fund can be obtained on [www.wisdomtree.eu](http://www.wisdomtree.eu).

**Remuneration Policy:** Details of WisdomTree Management Limited's remuneration policy, including a description of how remuneration and benefits are calculated and the identities of the persons responsible for awarding such remuneration/benefits, can be accessed from the following website: [www.wisdomtree.eu](http://www.wisdomtree.eu). A paper copy of these policy details is also available free of charge from WisdomTree Management Limited upon request.

**Pricing information:** The net asset value of the share class will be available during normal business hours every business day at the office of the Administrator and will be published daily on [www.wisdomtree.eu](http://www.wisdomtree.eu)

**Switching:** Switching of Shares between sub-funds of WisdomTree Issuer ICAV is not possible for investors who purchase shares on exchange. Switching may be available to authorised participants who deal directly with the Fund.

**Segregated liability:** The Fund is a sub-fund of WisdomTree Issuer ICAV, an umbrella Irish collective asset-management vehicle. Under Irish law the assets and liabilities of the Fund are segregated from other sub-funds within WisdomTree Issuer ICAV and the assets of the Fund will not be available to satisfy the liabilities of another sub-fund of WisdomTree Issuer ICAV.

**Taxation:** WisdomTree Issuer ICAV is resident in Ireland for taxation purposes. Irish taxation legislation may impact on the personal tax position of an investor.

**Liability statement:** WisdomTree Management Limited may be held liable solely on the basis of any statement contained in this document that is misleading, inaccurate or inconsistent with the relevant parts of the Prospectus

This Fund is authorised in Ireland and regulated by the Central Bank of Ireland. WisdomTree Management Limited is authorised in Ireland and regulated by the Central Bank of Ireland. This key investor information is accurate as at 11 February 2025